

# East Ham Gasworks

Newsletter, March 2026



## A new park for East Ham

**Over 100 local residents and community members attended the activity-packed Community Co-design Day at St Paul's Church on Saturday 31 January 2026, helping to shape the emerging vision for the former East Ham Gasworks site.**

Since the Co-design Day and subsequent Report Back, the project team has further developed the masterplan. The updated proposals are presented in this newsletter,

while the previous version remains available to download from the project website. The proposals include plans for a new public park, sports facilities and a residential neighbourhood of around 600 homes.

Following further discussions with local groups and neighbouring residents, the plans continue to be refined ahead of submitting an outline planning application to Newham Council in summer 2026.

### Contact us

**Email:** [community@jtp.co.uk](mailto:community@jtp.co.uk)

**Call:** Freephone 0800 012 6730

**Write to:** Freepost JTP (no stamp required)



**Find out more and have your say, scan the QR code or visit**

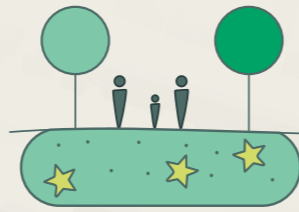
[jtp.co.uk/projects/east-ham-gasworks](http://jtp.co.uk/projects/east-ham-gasworks)



# The Masterplan



All homes will have doorstep access to green space.



A 6.7ha park delivering high-quality open space, cleaning up a contaminated former gasworks site.



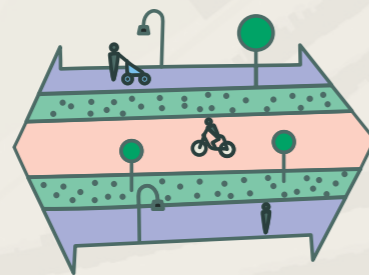
Local facilities which may include a nursery and local shop, to serve local needs.



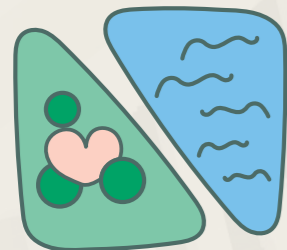
Improve health and wellbeing through publicly accessible green space, pedestrian and cycling connections.



The park encourages outdoor exercise with sports pitches and high quality public space.



Improved Watson Avenue with new high quality public realm.



Integration of water management strategy within the green infrastructure landscape.



Ensuring inclusive design considering age, gender and disability.



\*Numbers indicate illustrative storey heights



Enhancement of the Green Corridor to maximise opportunities for wildlife in green spaces.



A range of different types of housing to meet Newham's needs.



Achieving excellent sunlight levels onto the public realm, green spaces and play spaces.



Improved safety to the underpass and footbridge close to site.

# Enhancing the arrival onto Watson Avenue



## Project timeline

