

Help Shape Plans for the Development South & East of Feering

Coffee, Cake & Conversation!

Everyone is welcome!
Refreshments available all day.



Join us at the Community Engagement & Design Day on Saturday 9 March.
Feel free to pop in for a few minutes, participate in a design table or stay all day!

Land at Feering Community Engagement & Design Day

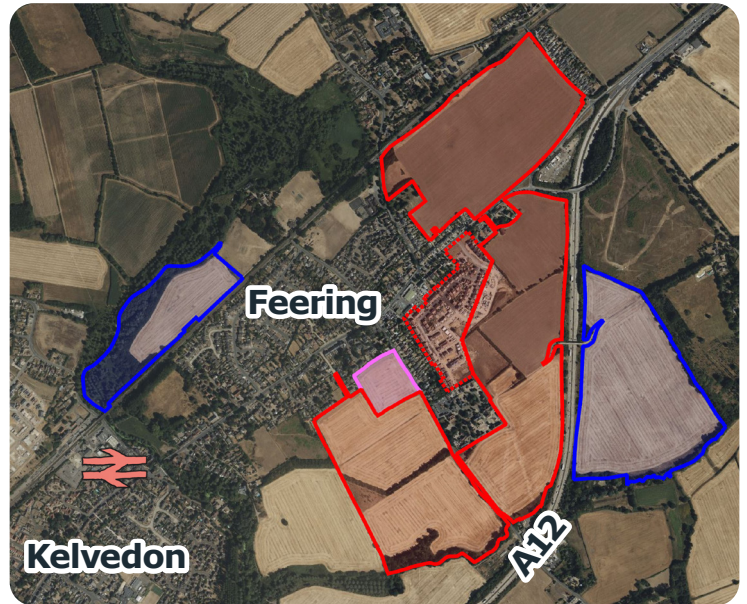
Saturday 9 March 2024

10.30am to 4pm

Feering Community Centre, CO5 9QB

Come along to the Community Engagement & Design Day for

- Background exhibition
- Interactive, themed design tables
- Informal conversations with the team
- Coffee truck
- Facepainting for kids



Site Map Key

- Allocation site boundary
- The Crown Estate additional landholdings
- - Phase 1 (constructed)
- Third Party Land

For more information visit
landatfeering.co.uk

Give Us Your Thoughts

In the run up to the Community Engagement & Design Day, scan the QR code to give us your views about Feering and the local area via the interactive map.



Community Engagement & Design Day

10.30am – 4pm, Saturday 9 March 2024

Feering Community Centre, Coggeshall Road, Feering CO5 9QB

Feel free to pop in for a few minutes, participate in a design table or stay all day!

Programme

10.30am to 4pm

Background exhibition, informal conversations & activities for young people

1pm to 1.30pm

Lunch - refreshments provided

1.30pm to 3.30pm

Themed, interactive design tables

11am to 1pm

Themed, interactive design tables

4pm Event closes

Themed, interactive design tables could include some of the following topics:

- Local context & heritage
- Landscape & environment
- Moving around
- Community
- Sustainability
- Local economy
- Sports & leisure
- Quality housing for all

Activities for young people will take place throughout the day!



Next Steps

After the Community Engagement & Design Day, the team will analyse and summarise the outcomes and **Report Back the Emerging Ideas** from 6.45pm to 8.15pm on **Wednesday 20 March 2024** at All Saints' Church Feering, The Street, Feering CO5 9QJ.

Following the Report Back of the Emerging Ideas, the team will develop the proposals through further meetings and design sessions with local people, young people and groups, **including two further public events**, and draw up an Outline Planning Application for submission to Braintree District Council in winter 2024.

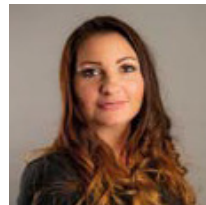
Background

The land to the south & east of Feering, owned by The Crown Estate, is included in the Braintree Local Plan (Policy LPP 21) and Feering Neighbourhood Plan. It is designated for development with a mix of new homes, community, education and employment uses and open spaces.

Local residents have already put a lot of good work into shaping the Feering Neighbourhood Plan, and we want to build on that to produce a development that really represents the identity of Feering, enhances the lives of residents and is driven by your vision for your community.

Community & Stakeholder Engagement Process

The Crown Estate is committed to working closely with the local community and Carl Walker and Paul Hanna will lead the community & stakeholder engagement process over the coming months. If you have any questions about the community engagement process please contact them using the details below.



Hannah Patrick
Community Partnerships Manager, The Crown Estate



Paul Hanna
Community Engagement Lead, Hoare Lea
07442 754643



Carl Walker
Community Engagement, Hoare Lea
07392 497818