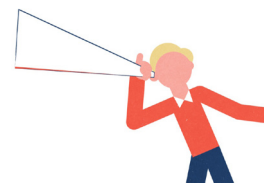
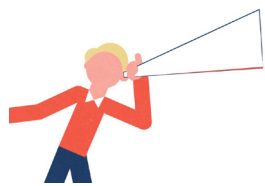


Calderdale Placemaking & Design Guide



Help build a better Calderdale!

You are invited to a series of events to help shape the new Placemaking and Design Guide for Calderdale

You can drop in to exhibition and workshop events to share your thoughts about the places you live, work and play in and help plan what well-designed streets, neighbourhoods, places and buildings should look like.

The exhibition and workshop events are open to everyone. Drop in for as long as you can:

Hebden Bridge

11am - 5pm, Tuesday 16 May 2023

The Town Hall, St George's Street,
Hebden Bridge HX7 7BY

Halifax

1.30pm - 7pm, Wednesday 17 May 2023

Caygill Rooms, The Piece Hall, Blackledge,
Halifax HX1 1RE

Elland

11am - 5pm, Wednesday 24 May 2023

Southgate Methodist Church,
Langdale Street, Elland HX5 0JL

Brighouse

11am - 5pm, Thursday 25 May 2023

St. John the Divine, St John Street,
Rastrick HD6 1HN

For a more detailed programme please see overleaf or visit jtp.co.uk/projects/calderdale

Once finalised, the Placemaking & Design Guide will be used to ensure that all developments in Calderdale respond to and reinforce the distinct character of our Borough, so it's important we hear from as many people as possible as we develop it.



Take part online

You can visit the Create Communities online map to give us your thoughts about the look and feel of the places in Calderdale where you live, work and play - what you like and dislike and why?

Scan me for the Create Communities online map
Click a location on the plan that you want to comment on



Calderdale Placemaking & Design Guide

Help build a better Calderdale!

May 2023

Help shape the new Placemaking & Design Guide for Calderdale

Calderdale Council has appointed JTP, architects and community planners, to engage with the local community and stakeholders and draw up a Placemaking and Design Guide. A series of public events and an online comments platform have been organised to invite local people to help shape the emerging Guide.

Background

The Placemaking and Design Guide will set out what well-designed streets, neighbourhoods, places and buildings should look like and how new development should respond to and reinforce the distinct character of Calderdale. The Guide will also include advice on how to prepare and submit planning applications.

Once finalised, the Guide will be adopted by the Council as a Supplementary Planning Document (SPD) to ensure that all developments in Calderdale deliver a consistent and high-quality standard of design. This will create a legacy for the future and meet the Council's priorities to reduce inequalities, create thriving towns and places, and tackle the climate emergency.

Public events

You can drop in to any event for a few minutes to view the background exhibition, ask questions and give your comments or, if you have more time available, take part in walkabouts, workshops and hands-on planning groups facilitated by the JTP team.

Next steps

Following the events, the JTP team will analyse the outcomes and draw up the draft Placemaking and Design Guide, which will be reported back to the community for comment later in the summer.

Event timings

Hebden Bridge

The Town Hall, St George's Street HX7 7BY

11am - 5pm, Tuesday 16 May

11am	Drop-in exhibition opens
1pm	Introduction and dialogue workshop
2pm	Town walkabout
3pm	Hands-on planning groups
4pm	Report back
4.30pm	Workshop closes, exhibition continues
5pm	Drop-in exhibition closes

Halifax

The Piece Hall, Blackledge, Halifax HX1 1RE

1.30pm - 7pm, Wednesday 17 May

1.30pm	Drop-in exhibition opens
2pm	Introduction and dialogue workshop
3pm	Town walkabout
4pm	Hands-on planning groups
5pm	Report back
5.30pm	Workshop closes, exhibition continues
7pm	Drop-in exhibition closes

Elland

Southgate Methodist Church, Langdale Street HX5 0JL

11am - 5pm, Wednesday 24 May

11am	Drop-in exhibition opens
1pm	Introduction and dialogue workshop
2pm	Town walkabout
3pm	Hands-on planning groups
4pm	Report back
4.30pm	Workshop closes, exhibition continues
5pm	Drop-in exhibition closes

Brighouse

St. John the Divine, St John Street HD6 1HN

11am - 5pm, Thursday 25 May 2023

11am	Drop-in exhibition opens
1pm	Introduction and dialogue workshop
2pm	Town walkabout
3pm	Hands-on planning groups
4pm	Report back
4.30pm	Workshop closes, exhibition continues
5pm	Drop-in exhibition closes