

ALBION WATERSIDE REGENERATION, GRAVESEND: NEWSLETTER, JULY 2020



ALBION WATERSIDE

Joseph Homes is pleased to be bringing forward a proposal for the residential-led, mixed-use redevelopment of Albion Waterside, Canal Road (site outlined in red above). The regeneration proposals for this brownfield, urban site will include new homes, new commercial uses, public space and pedestrian access to the riverside in a previously inaccessible area.

COMMUNITY CONSULTATION

Joseph Homes is committed to engaging with local stakeholders and the wider community. During July and August we will be holding consultation activities to present the background of the Albion Waterside site and gather ideas on possible uses for the site and its relationship with the surrounding neighbourhood.

Due to the Covid-19 pandemic we may not be able to hold face to face meetings and exhibitions in the way that we would usually seek to, but we will do our utmost to ensure easily accessible communication with the community via this new website, physical newsletters and a Freephone number **0800 012 6730**.

HAVE YOUR SAY!

As a first step we would like to hear your 'likes' and 'dislikes' about the Albion Waterside site and the surrounding area and your 'dreams' for the regeneration of the site itself. You can do this either by visiting AlbionWaterside.co.uk to view more background on the proposals and go

through to our "Communities" platform to make your comments or by filling in the postcard form on this newsletter; detaching it and mailing it back to us by Freepost - no envelope or stamp required. We welcome comments by **Wednesday 26 August 2020**.

NEXT STEPS

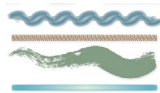
We will feed all comments received to our design team as they work up a Vision for the site, which will be presented back to the community at 6pm on Wednesday 2 September via a virtual meeting on Zoom, on our website and a further newsletter. Following the presentation, we will seek comments on the Vision and we will develop the proposals through continuing stakeholder and community dialogue, including a physical exhibition later in the autumn, subject to Government Covid19 social distancing guidelines. Our aim is to submit a planning application to Gravesham Borough Council in January 2021 and around this time we will hold another exhibition to show and explain clearly the submitted proposals.

For regular updates please visit
AlbionWaterside.co.uk

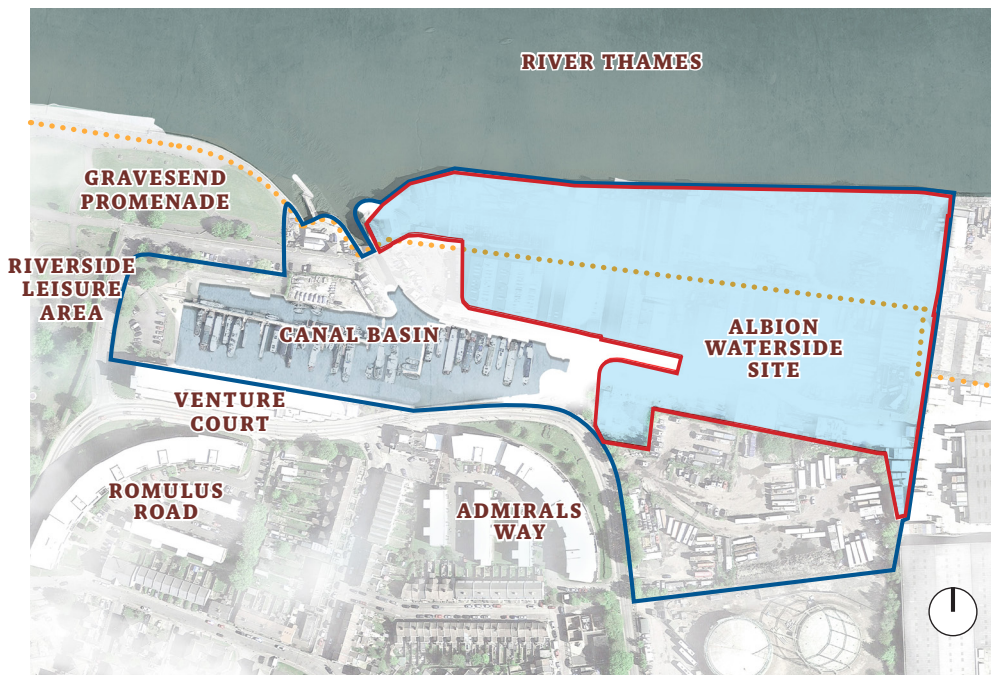
**Joseph
Homes.**
LIVE WELL®



The Albion Waterside Regeneration community planning process is being organised by JTP on behalf of Joseph Homes. For more information please visit AlbionWaterside.co.uk or contact the JTP community planning team at community@jtp.co.uk or on Freephone **0800 012 6730**.



ALBION WATERSIDE REGENERATION, GRAVESEND: NEWSLETTER, JULY 2020



— Development boundary — Key Site 2.1 Allocation Boundary •••• Saxon Shore Way

PLANNING POLICY CONTEXT

The Albion Waterside site forms part of an area allocated by the Council (Key Site 2.1) for regeneration. Gravesham Core Strategy Policy CS04 recognises the potential to improve the quality of the urban environment whilst delivering much needed homes.

Joseph Homes is committed to delivering the opportunities in this location, integrating with the surrounding area and acknowledging Gravesend's heritage to achieve the Council's ambitions for the site to:

- Create a new neighbourhood including

much needed homes, reducing pressure on non-brownfield sites and the Green Belt;

- Provide opportunities for job growth, including office and light industrial uses;
- Deliver retail in a local centre to serve resident and daytime population;
- Protect the alignment of the former Thames and Medway Canal;
- Improve the Saxon Shore Way and National Cycle Route, and;
- Create varied public realm including a riverside walkway, green spaces and areas for play.

We would like to hear your views about the regeneration of the Albion Waterside site. Please fill in the form opposite or online at AlbionWaterside.co.uk.

HAVE YOUR SAY!

In the first stage of the consultation, we would like to hear your 'likes' and 'dislikes' about the Albion Waterside site and the surrounding area and your 'dreams' for the regeneration of the site itself. You can do this either by visiting AlbionWaterside.co.uk to view more background on the proposals and go through to our "Communities" platform to make your comments or by filling in this postcard form, detaching it and mailing it back to us by Freepost - no envelope or stamp required. We welcome comments by **Wednesday 26 August 2020**.

WHAT SPECIFICALLY DO YOU LIKE ABOUT THE ALBION WATERSIDE SITE AND THE SURROUNDING AREA?

WHAT SPECIFICALLY DO YOU DISLIKE ABOUT THE ALBION WATERSIDE SITE AND THE SURROUNDING AREA?

WHAT ARE YOUR DREAMS FOR THE FUTURE OF THE ALBION WATERSIDE SITE ITSELF?

NAME _____ EMAIL _____

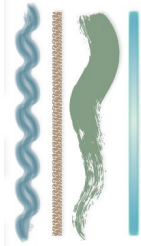


Thank you for taking time to complete this questionnaire. We will collate the answers received to use in the design process to help with creating the Vision for the Albion Waterside site. We will share this Vision with you at 6pm on Wednesday 2 September via Zoom and ask for your feedback before further developing the proposals for the site.

PERSONAL DATA PROTECTION

Full details of how we process, manage and retain your personal information can be found online in our Privacy Notice at jtp.co.uk/projects/community-planning. JTP will retain your details in order to communicate with you about the Albion Waterside Regeneration project up to and including the submission of the planning submission. We may share your personal details with the project team but not with any other third parties.

To opt out of receiving future updates about the Albion Waterside Regeneration project, please email us at optout@jtp.co.uk or write to us at Freepost JTP (no stamp required).



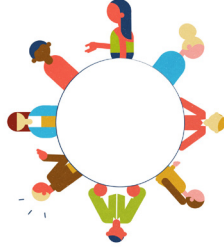
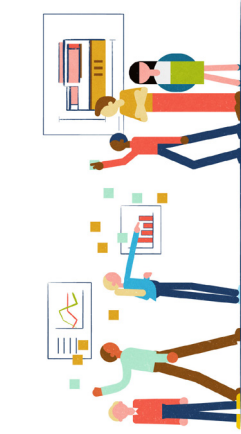
ALBION WATERSIDE REGENERATION, GRAVESEND JULY 2020

Joseph
Homes.
LIVEWELL®



return to

Freepost JTP



The Albion Waterside Regeneration community planning process is being organised by JTP on behalf of Joseph Homes. For more information please visit: AlbionWaterside.co.uk or contact the JTP community planning team at community@jtp.co.uk or on **Freephone 0800 012 6730**.