

# Nicholsons Shopping Centre Community Planning Weekend

Friday 22 March to Tuesday 26 March 2019



Everyone is  
welcome!

Community workshops and exhibitions at  
Nicholsons Shopping Centre,  
Maidenhead SL6 1LB

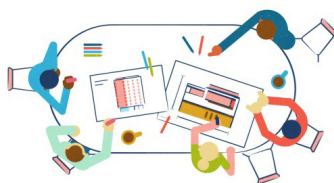
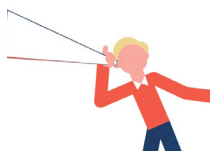
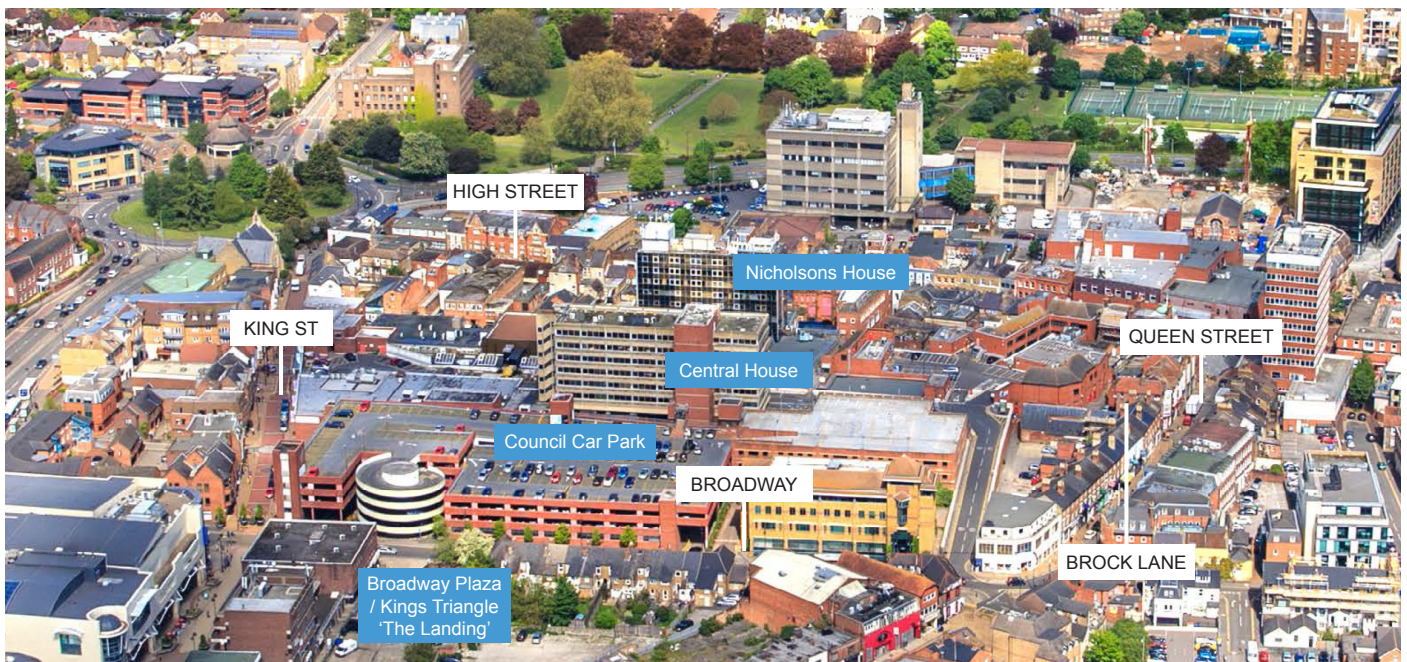
Former Argos & Secrets units by the Brock Lane entrance

Friday 22 March 1:45pm to 5:30pm

Saturday 23 March 11:00am to 4:00pm

Report Back at St Mary's Church Hall, St Mary's  
Close, 14 High Street, Maidenhead SL6 1YY

Tuesday 26 March 6:45pm to 8:30pm



The exhibitions will be held in the former **Secrets** unit on Queen's Walk and the workshops will take place opposite, in the former **Argos** unit on Brock Lane Mall, close to the Brock Lane entrance off Queen Street.

ARELI  
REAL ESTATE

The Nicholsons Shopping Centre Community Planning Weekend is being organised by JTP and Areli Real Estate on behalf of Tikehau Capital, the new owners of Nicholsons Shopping Centre. For more information please visit [jtp.co.uk/projects/maidenhead](http://jtp.co.uk/projects/maidenhead) or contact the Community Planning team at [community@jtp.co.uk](mailto:community@jtp.co.uk) or on Freephone 0800 0126 730.

[jtp.co.uk](http://jtp.co.uk)

# Nicholsons Shopping Centre Community Planning Weekend

Friday 22 March to Tuesday 26 March 2019

You are invited by JTP and Areli Real Estate on behalf of Tikehau Capital, the new owners of Nicholsons Shopping Centre, to the **Nicholsons Shopping Centre Community Planning Weekend** to help shape the future regeneration of this important part of Maidenhead town centre.

## Everyone is welcome!

### Background

The Maidenhead Town Centre Area Action Plan (AAP), adopted in 2011, aims to revive the character of the town centre, creating a sense of place and a destination for shoppers, residents, businesses and visitors. It identifies “opportunities for new building, new streets and spaces, for improved shopping facilities and attracting new businesses, for creating new homes and providing social and cultural attractions as well as further improving the towns accessibility”.

The Nicholsons Shopping Centre is an important element of the town centre and its regeneration provides the opportunity for significant mixed-use redevelopment in line with the aspirations of the AAP. The new owners of the shopping centre Tikehau Capital is committed to working closely with the local community to shape the future of the site and its relationship with the wider town and has appointed architects and urban designers JTP to facilitate the Community Planning process.

### Community Planning Weekend

The Community Planning Weekend will be a chance to share local knowledge and contribute to creating a new Vision through facilitated workshops and hands-on planning groups. There will also be an exhibition explaining the background of the site and team members will be on hand to answer questions. Participation is on a drop-in basis – there is no need to pre-register – you can stay for a short while, a few hours or for the whole event if you are able to.

### Report Back Presentation

Following the public workshop days, the JTP-led team will analyse and summarise the outcomes and draw up a Vision for The Nicholsons Shopping Centre, including an illustrative masterplan. This will be presented back to the local community on Tuesday 26 March at St Mary's Church Hall.

After the Community Planning Weekend, the design team will move forward to prepare a planning application for the site which it is anticipated will be submitted early in 2020.

### Friday 22 March, Public Workshop Day 1

Nicholsons Shopping Centre, Maidenhead SL6 1LB

Workshops - Former Argos Unit & Exhibition - Former Secrets Unit

- 1.45pm Doors open & **exhibition begins**
- 2.00 Welcome and introduction
- 2.10 **Dialogue Workshop - Nicholsons Shopping Centre Today**  
What are the issues and opportunities for the regeneration of the shopping centre site and its relationship with Maidenhead and the surrounding area?  
**Young People's Workshop** - A chance for young people to talk about the site and to draw ideas for the future.
- 3.15 Refreshment break
- 3.30 **Hands-on Planning Groups**  
Work in small, facilitated groups to consider key opportunities for the site and its relationship with the wider area and start to plan ideas for the future. Groups may choose to walk about the town centre to see and discuss opportunities and connections.
- 4.45 Refreshment break
- 5.00 **Feedback** from Hands-on Planning Groups
- 5.30 Workshops and exhibition conclude

### Saturday 23 March, Public Workshop Day 2

Nicholsons Shopping Centre, Maidenhead SL6 1LB

Workshops - Former Argos Unit & Exhibition - Former Secrets Unit

- 11.00am Doors open and **exhibition begins**
- 11.15 Welcome and introduction
- 11.30 **Dialogue Workshop - Nicholsons Shopping Centre Tomorrow**  
What are the opportunities to regenerate the site to create an exemplar 21st century town quarter which complements the town centre?  
**Young People's Workshop** - Another opportunity for young people to talk about the site and to draw ideas for the future.
- 12.45pm Lunch break
- 1.30 **Hands-on Planning Groups**  
Another opportunity to work in small, facilitated groups to consider key issues for the site and its relationship with the wider area and start to plan ideas for the future.  
**Young People's Workshop (continued)**
- 2.45 Refreshment break
- 3.00 **Feedback** from Hands-on Planning Groups
- 3.30 **Next Steps**
- 4.00 Workshops and exhibition conclude

### Tuesday 26 March, Report Back Presentation

St Mary's Church Hall, St Mary's Close, 14 High Street, Maidenhead SL6 1YY

- 6.45pm Doors open
- 7.00 **Report Back** of the Vision for Nicholsons Shopping Centre
- 8.30 Close