

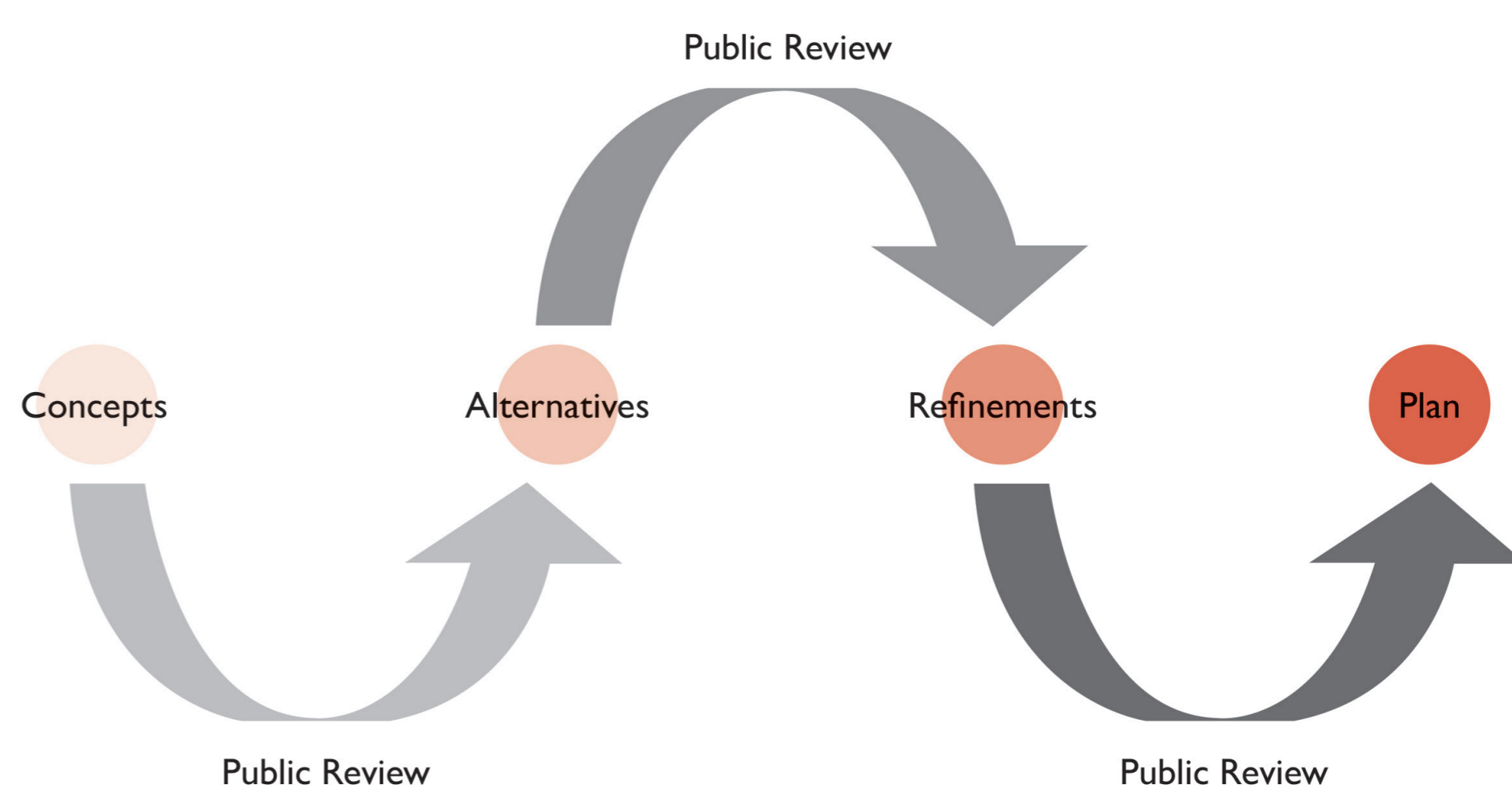
A Vision for Bodmin Town Centre

Community Planning Weekend - 18 March to 22 March 2022

What is a Charrette?

A Charrette is an intensive, hands-on co-design workshop that brings people from different disciplines and backgrounds together with members of the community to create a consensus Vision and implementation plan for a specific area. The multi-day timescale with a deadline helps accelerate decision making and encourages people to “think outside the box”.

The term “Charrette” is derived from the French word for “little cart”. In Paris during the 19th century, professors at the Ecole de Beaux Arts circulated with little carts to collect final drawings from their students. Students would jump on the “charrette” to put finishing touches on their presentation minutes before the deadline.



Feedback Loops



Teamv Tour



Young People's Workshop



Post-it Workshop



Hands-on Planning Workshop



Report Back



Presentation of the Vision

A Vision for Bodmin Town Centre

Community Planning Weekend - 18 March to 22 March 2022

The Charrette programme

The Bodmin Charrette from Friday 18 March to Tuesday 22 March will be an opportunity for local residents to share their knowledge and views and work with partners to co-create a vision for the town centre. These drop-in sessions, which are open to everyone, are being held at the Shire Hall between 1:45pm and 5.30pm on Friday 18 March, and between 11.00am and 4.00pm on Saturday 19 March 2022.

Participation is on a drop-in basis – there is no need to pre-register – you can stay for a short while, a few hours or the whole event if you are able to. Team members will be on hand to answer questions.

The team from JTP will then analyse the outcomes from the workshops and draw up a vision for the town centre, which will include an illustrative vision. This will be presented back to the local community on the evening of the final day - Tuesday 22 March 2022.

Following the Charrette, members of the Bodmin Town Team will review the outcomes of the five-day event. The charrette work and illustrative vision will be used to inform the Town Centre Action Plan and the Reimagining Fore Street work, funded by Cornwall Council's Town Centre Vitality funding and led by the Bodmin Town Team.

The Town Centre Action Plan and Reimagining Fore Street work will use the revenue funding to identify how the ambitions outlined from the charrette can be delivered and identify 'meanwhile' uses to revitalise the town centre. The work will be considered by the Neighbourhood Plan Group, Bodmin Town Council and Local Cornwall Councillors. Partners will then work together to develop business cases for individual elements of the scheme which will be used to support future bids for funding.

Once acceptable and viable development proposals have been agreed by partners, the proposals will then go out to a further round of public consultation before the Town Centre Action Plan and Reimagining Fore Street Plan is presented to key stakeholder groups.

Charrette Agenda

Friday 18 March

Shire Hall, Bodmin

- 1.45pm Doors open & exhibition begins
- 2.00pm Welcome and Introduction
- 2.15pm Dialogue Workshop Young People's Workshop
- 3.15pm Refreshment break
- 3.30pm Hands-on Planning Groups
- 4.45pm Refreshment break
- 5.00pm Feedback from Hands-on Planning
- 5.30pm Workshops & exhibition conclude

Saturday 19 March

Shire Hall, Bodmin

- 11.00am Doors open & exhibition begins
- 11.15am Welcome and introduction
- 11.30am Dialogue Workshop Young People's Workshop
- 12.45pm Lunch break
- 1.30pm Hands-on Planning Groups
- 2.45pm Refreshment break
- 3.00pm Feedback from Hands-on Planning
- 3.30pm Next Steps
- 4.00pm Workshops & exhibition conclude

Report Back Presentation

Tuesday 22 March

Shire Suite, Bodmin

- 6.45pm Doors open
- 7.00pm Report Back of the Vision
- 8.00pm Close

A Vision for Bodmin Town Centre

Community Planning Weekend - 18 March to 22 March 2022

The journey so far ...

Place Shaping Strategy		Projects Delivered
	2014	<ul style="list-style-type: none"> ● Lanhydrock Cycle Hub
	2015	<ul style="list-style-type: none"> ● Cornwall Council Chy Trevail Offices ● A30 - Temple Improvements
Cornwall Local Plan informed by Bodmin Town Framework Plan - adopted	2016	<ul style="list-style-type: none"> ● Bodmin Library - relocation to Cornwall Council Chy Trevail Offices
	2017	<ul style="list-style-type: none"> ● Callywith Gate Development - road improvements ● Callywith College - main Campus ● Building a Better Bodmin - low speed environment ● IntoBodmin established - moved into Bodmin Old Library Premises
	2018	
Cornwall Site Allocation Development Plan Document - adopted Bodmin Vision Bodmin 2030 and Beyond - launched	2019	<ul style="list-style-type: none"> ● New Devon & Cornwall Police Headquarters built ● Contemporary Cornish Living Phase 1 ● Bodmin Cinema - new four screen cinema ● Sowenna - first Child and Adolescent Mental Health Services unit
	2020	<ul style="list-style-type: none"> ● Bodmin Jail - new visitor attraction opens
Town Team Established - to support the delivery of Bodmin Vision Town Vitality Funding (TVF) - revenue funding secured Draft St Lawrence Urban Extension Concept Masterplan - consultation	2021	<ul style="list-style-type: none"> ● Bodmin Jail Hotel - luxury four star hotel ● Taxi Electronic Vehicle Car Charging Points installed ● Discovery 42
Town Centre Charrette Community planning weekend to identify a vision for Bodmin Town Centre	2022	<ul style="list-style-type: none"> ● Making space for nature ● Callywith College - new STEM facility
Town Centre Action Plan and Reimagining Fore Street work Using TVF funding and ambitions from the Town Centre charrette to inform delivery for a vibrant town centre - anticipated completion 2023	2023+	

Still to come

Bodmin E-Bikes | Open Reach Fibre First Rural Programme | Project Gigabit | Bosvena Special School | New purpose built GP surgery
Contemporary Cornish Living - Phase 2 development | New primary school (on St Lawrence Urban Extension Site)

A Vision for Bodmin Town Centre

Community Planning Weekend - 18 March to 22 March 2022

JTP Collaborative Placemaking



About JTP

We put people at the heart of the planning process, unearthing the real needs of a community, empowering stakeholders, creating goodwill, inspiring community spirit and building consensus.

Far from imposing ready-made off-the-shelf solutions, we will build a vision together. This leads to places that are vibrant, valued and sustainable from the outset. We approach all our projects through a process of Understanding, Engaging, Creating.

Understanding the DNA of a place is fundamental to successful placemaking. We don't stop until we truly get under the skin of a place and identify what makes it special.

Engaging stakeholders and the wider community at an early stage encourages understanding, creates shared ownership, and allows the construction of a collective vision.

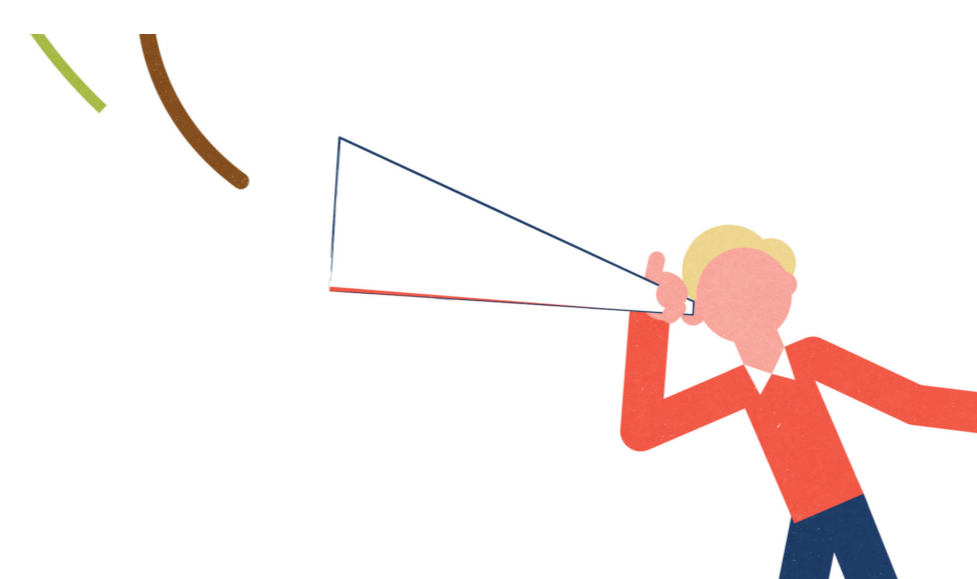
Creating begins with the visioning process and ends with physical interventions. Along the way there are many issues to resolve and many actions to coordinate.

This adds up to a process we call "Collaborative Placemaking".

"Collaborative Placemaking"



We listen



We debate



We draw together



We create new places and breathe life into old ones

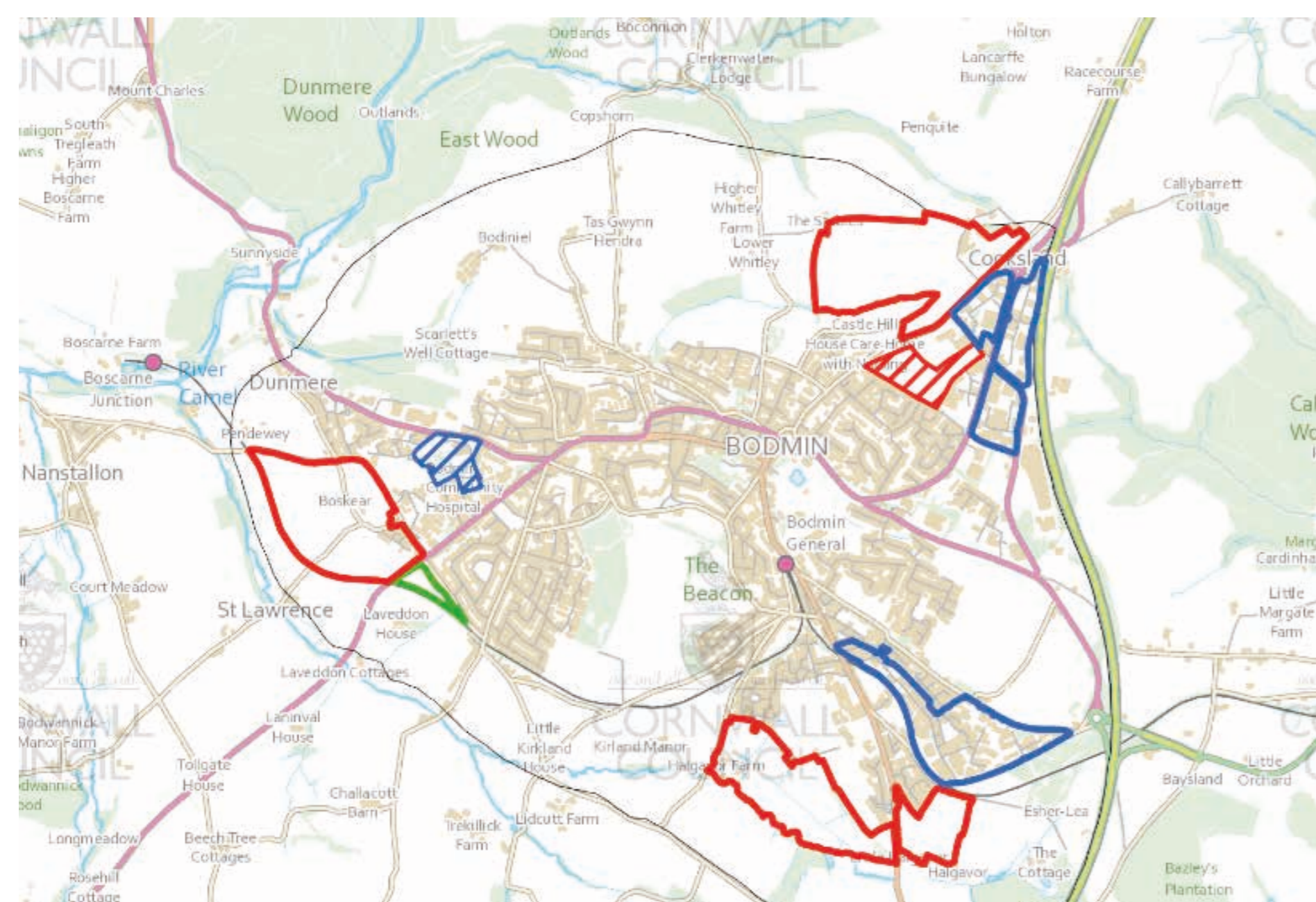


A Vision for Bodmin Town Centre

Community Planning Weekend - 18 March to 22 March 2022

A vibrant future

Previous work has identified growth and place priorities for Bodmin. This work was informed by earlier consultations and is outlined in the Cornwall Local Plan and the associated Site Allocations document.



Site Allocations Key:

- Housing
- Safeguarded employment
- Mixed use
- Other
- Employment

Significant events, such as the Climate Change Emergency and the Covid Pandemic have had a profound impact on residents, businesses and local communities in recent years.

With significant changes in the way we live and work and a concerted effort to support climate change and sustainable community resilience, we want to understand what makes Bodmin unique, the challenges the local community are facing, capture the opportunities for the town centre and identify the community's ambitions to deliver a vibrant and sustainable town centre.

The Bodmin 2030 and Beyond Vision, which was launched in 2019, identifies the long-term ambitions for the town as 'an attractive, thriving town centre which has evolved into a community hub offering a variety of daytime and evening meeting places and experiences as well as retail opportunities.'

Cornwall Council has committed to work with local partners to progress the next steps to understand how this ambition can be delivered. The first of these steps is through this community planning event called a Charrette, in which we are supported by JTP architects who are specialist architects, urban designers and community planners.



The Charrette will capture your vision for the town centre and will be used to inform the Town Centre Action Plan and Reimagining Fore Street work, led by the Bodmin Town Team, following the Charrette event.



A Vision for Bodmin Town Centre

Community Planning Weekend - 18 March to 22 March 2022

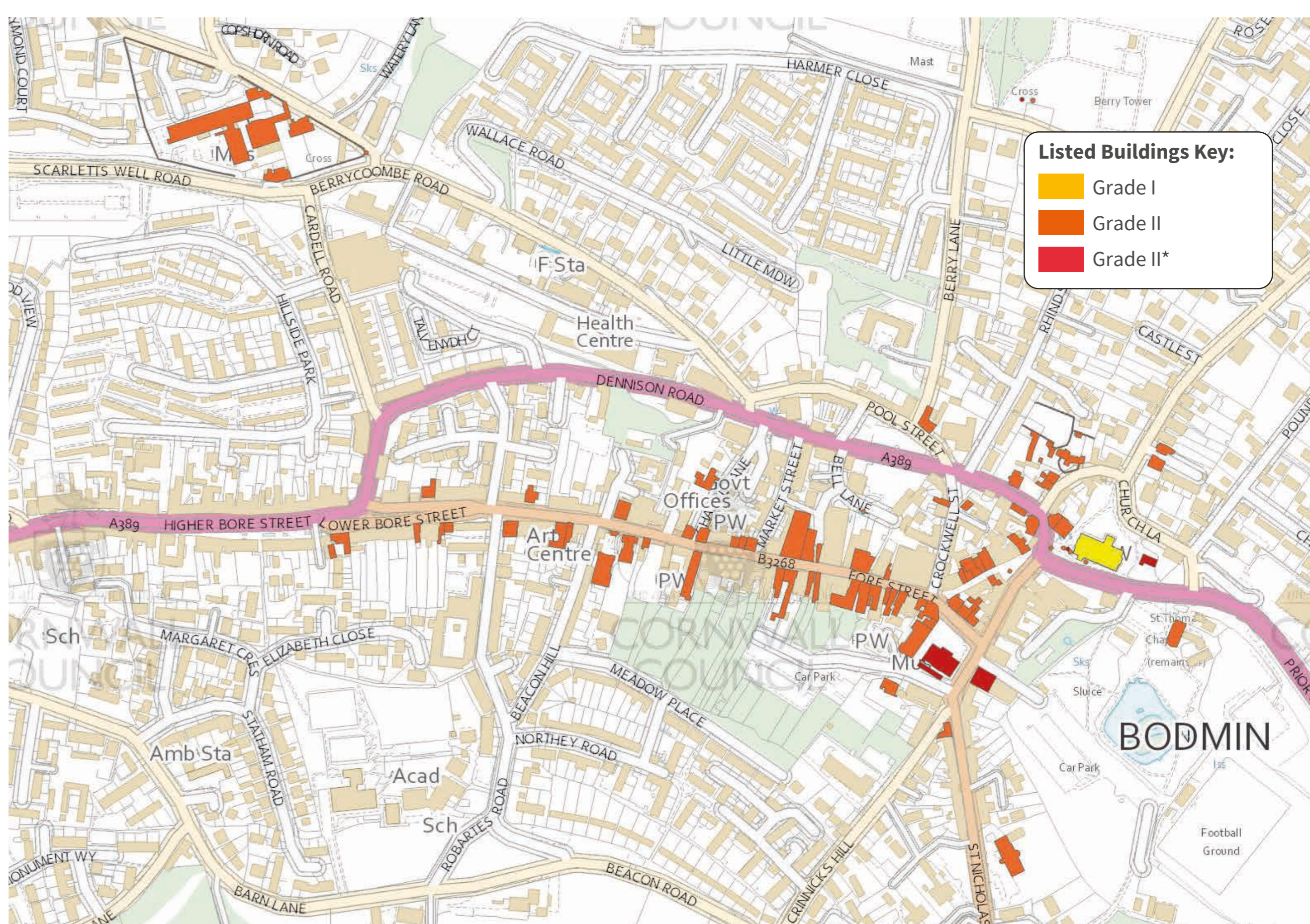
A vibrant historic mix

The historic extent of Bodmin town centre is relatively well defined, with the character of the central area deriving strongly from the survival of historic buildings and the distinctive street layout. Honey Street, Fore Street and Lower and Higher Bore Streets essentially comprise 'one long street' leading west through the town from the historic focus at St Petroc's Church. Much of the central area is subject to a Conservation Area designation.

The largest element of Bodmin's historic built environment dates from the nineteenth and early twentieth century, particularly through a range of civic and institutional buildings and an array of terraced housing from industrial periods. There are a number of listed buildings located in the central area, with a particular concentration in Fore Street and Honey Street (as shown right).

The town's visual distinctiveness is based on the diversity within its built environment. There is no one time period, architectural style or material that defines the town. The Cornwall & Scilly Urban Study (CSUS) 'Historic Characterisation for Regeneration' for the town identifies that Bodmin's real character and unique sense of place result from the organic mix and contrast of elements which has emerged over the many centuries of its history.

The historic buildings lining the main streets in the central area are predominantly three storey in height, which in conjunction with the narrow streets, create a strong sense of enclosure. Views out from the central area are characterised by greenery, with the strong wooded skylines and the backdrop of the valley sides.



A Vision for Bodmin Town Centre

Community Planning Weekend - 18 March to 22 March 2022

Next Steps

Thank you for your time.

The Charrette exercise will help us draw together different pieces of existing work, test them against current aspirations and economic conditions to inform the Town Centre Action Plan and Reimagining the Fore Street work, being led by Bodmin Town Team.

1.

Following the Charrette, members of the Bodmin Town Team will review the outcomes of the five-day event. The charrette work and illustrative vision will be used to inform the Town Centre Action Plan and the Reimagining Fore Street work, funded by Cornwall Council's Town Centre Vitality funding and led by the Bodmin Town Team.

2.

The Town Centre Action Plan and Reimagining Fore Street work will use the revenue funding to identify how the ambitions outlined from the charrette can be delivered and identify 'meanwhile' uses to revitalise the town centre.

3.

The work will be considered by the Neighbourhood Plan Group, Bodmin Town Council and Local Cornwall Councillors. Partners will then work together to develop business cases for individual elements of the scheme which will be used to support future bids for funding.

4.

Once acceptable and viable development proposals have been agreed by partners, the proposals will then go out to a further round of public consultation before the Town Centre Action Plan and Reimagining Fore Street Plan is presented to key stakeholder groups.



To find out more about the project, please visit jtp.co.uk/project/bodmin or contact the Community Planning team at community@jtp.co.uk or call 0800 0126730

A Vision for Bodmin Town Centre

Community Planning Weekend - 18 March to 22 March 2022

Bodmin Vision 2030 and beyond

The Bodmin Vision 2030 and Beyond was created and launched in July 2019 by local representatives¹ to outline the ambitions for the future of Bodmin. It is designed to be an ambitious, realistic and credible 'Agenda for Bodmin'.

The Vision seeks to build on the strengths of the town and present a distinctive image of the sort of place we want Bodmin to become in the next 10 to 20 years. We see Bodmin in the future as a place:



With a **strong, confident identity** based on its rich history and heritage and its 21st century ambitions; and where this identity is used to support the growth of business, employment and tourism.



Which is the **centre for services and facilities serving east Cornwall** and, in some cases, the whole of Cornwall, taking full advantage of its location and accessibility.



Where **community engagement and community action is supported** to resolve problems and make things happen; and where everyone feels part of the town.



Which has many businesses providing **high quality, highly paid jobs** and is recognised as the focal point for the food and drink industry in Cornwall.



Which is a **major tourism destination** based on its heritage attractions, cultural events and recreational opportunities; and which attracts year-round visitors from Cornwall and beyond.



Which values **the health and well being of its residents** with opportunities for all age groups to lead active lives and to benefit from the best practice in health promotion and disease prevention.



With an **attractive, thriving town centre** which has evolved into a community hub offering a variety of daytime and evening meeting places and experiences as well as retail opportunities.

The journey towards this Vision will see the town building economic resilience and offering an increasing diversity of experiences to residents and visitors; and see the local community progressively taking more ownership and control of its future.



Which is a **self supporting, sustainable community** where jobs, transport provision, services and facilities have all kept pace with and are closely linked to population growth.

¹ Bodmin Town Council, Cornwall Council Divisional Members for Bodmin (2019), Bodmin Chamber of Commerce, Better Bodmin, Bodmin & Wenford Railway, Bodmin Keep (formerly Cornwall's Regimental Museum), Bodmin Jail, IntoBodmin, Stillmore House Practice, Carnewater Practice, Bodmin College, Callywith College, Bodmin Team Ministry, Bodmin Local Police Inspector, National Trust - Lanhydrock

A Vision for Bodmin Town Centre

Community Planning Weekend - 18 March to 22 March 2022

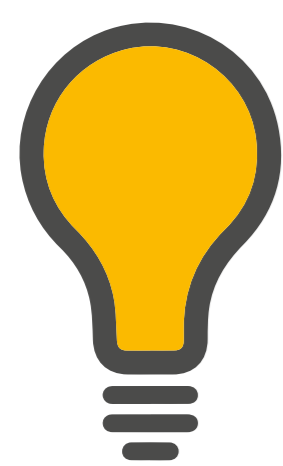
Local Economy and Skills

Cornwall and the Isles of Scilly LEP is ambitious for its people. Our ambitions are to grow the economy, build on its assets and provide everyone with the opportunity to access good quality jobs, whilst setting a course for a decarbonised and sustainable future for business, for people and for our environment.

If these ambitions are to be realised then a step change in the skills system is needed not only to grow the economy, but also to meet the challenges and opportunities arising through the impact of the pandemic, automation, changing working practices and an ageing workforce.

Whilst we cannot predict exactly how skills needs will change, we know that they will, and devolution will offer us the opportunity to shape a responsive employer-led skills system to develop a flexible, adaptable and skilled workforce fit for the future.

Skills Strategy four long term priorities with accompanying actions



INSPIRE

Developing the workforce of tomorrow

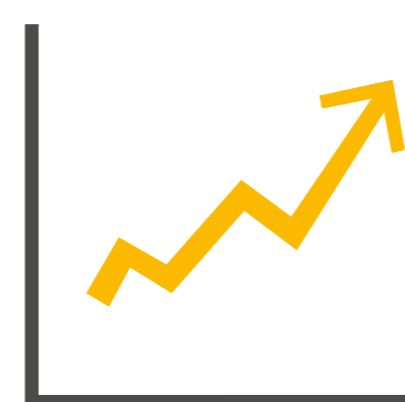
- Actions around high quality Careers Education, Information, Advice and Guidance (CEIAG) which informs and inspires young people about our unique future opportunities and fosters CloS's spirit of entrepreneurship.



TRANSFORM

A productive workforce

- Meeting the sector-specific requirements of employers through a more collaborative and employer-led approach, providing learners with clear progression pathways to higher level creative and technical skills.
- Support for sectors, businesses and people to make the transition to a digital and sustainable world.



INNOVATE

Accelerate the growth and diversification of the economy

- Develop the leadership and high level skills needed to drive growth, innovation and productivity.



THRIVE

Opportunity for all

- The skills, anti-poverty and health agendas work together to develop an inclusive 'whole person' approach to skills which enables people to retain, progress into work or towards the labour market.